

Otokar

ATLAS



8.5 t - 12 t





Otokar; Your Reliable Partner

- Share of 10-year R&D expenditures in turnover is 8%
- Exporting over 60 countries
- Production site in Sakarya, Turkey
- Site surface area: 552,000 m²
- Founded in 1963

8,5 t



Garbage Truck



Road Sweeper Truck



Hydraulic Platform



Towing Truck



Dump Truck



Firetruck



Sewage Cleaner Truck



“Otokar Atlas” is here with multiple body options

12 t



Refrigerated Ice Cream Truck



Box Top Truck



Beverage Truck



Refrigerated Box Truck



Flatbed Truck



Cylinder Gas Carrier



Soft Top Truck



Otokar Atlas is equipped with a robust steel chassis with a corrosion resistant, rivet-free surface, and offered with a variety of body configurations.

With full air brake system, Otokar Atlas is the most superstructure friendly truck.

Otokar Atlas is ready to tackle a diverse range of tasks as a garbage truck, haulage truck, hydraulic platform, firetruck, dump truck, sewage cleaner truck and more.

New Excitement in the City!

The Otokar Atlas truck is launched to the European Market after years of experience.

Otokar Atlas gets a modern face and enhanced features, including a new cabin with stronger lines and a sharper look, a freshly designed front grille, and headlights.

Otokar Atlas, enhanced with new features added to its superior standards, elevates driving performance, comfort and safety to the maximum. Otokar Atlas also stands out with its fuel economy.





ATLAS

Performance

Otokar Atlas is ready for heavy duty.

Otokar Atlas, with a powerful, high-torque engine, is designed to carry the heaviest loads in the most challenging road conditions.

Economy

Otokar Atlas, supports users' economy with low fuel consumption, low maintenance costs and affordable spare part prices, comes with a new ambitious feature. The FSS (Fuel Saving Setting) button allows the driver to select the driving mode for diverse road conditions and makes it possible to manage the performance and fuel economy of Otokar Atlas.

Otokar Atlas has it all!

Atlas features a dashboard with a 3.2" digital screen, enabling the driver to access vehicle settings, drive data and warnings easily. The digital dashboard also allows the driver to view instant road data through ACC (Adaptive Cruise Control), a system that ensures driving safety.

Otokar Atlas is also equipped with Bluetooth technology, which enables the driver to make hands-free calls safely.

Otokar Atlas stands apart with its focus on technology, and the instrument cluster, with its stylish and modern design, harmonious colors, and accessible controls, enhances driving comfort.

Digital screen on dashboard with two selectable display options



Normal Mode



Sport Mode



Multifunction steering wheel



Air Conditioning (AC)



With increased height inside the cab, Otokar Atlas offers a spacious and bright interior thanks to larger volume, wider windows and windshield.

Stylish and ergonomic seats with height-adjustable headrests, and an adjustable driver seat, provide ergonomics and comfort even in the longest journeys.

The heated mirrors are electronically controlled, and can be automatically adjusted from the driver seat.

The headlights switch on automatically and Daytime Running Lights (DRL) are always on to, enable safety in all conditions.



Cup Holders



Ergonomic Seat Design



Overhead Storage Space



Glove Compartment



Electrically-operated and heated door mirrors



Reinforced doors gradually opening to 90°



Daytime Running Lights (DRL)



Illuminated step



3 headlight settings, automatic headlights switch on to adjust to outside light

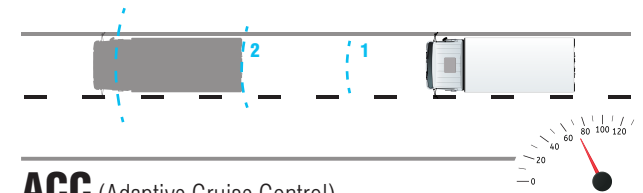


Otokar Atlas Makes roads even safer

The superior stance and wide front footprint of Otokar Atlas ensures excellent road handling and safer driving.

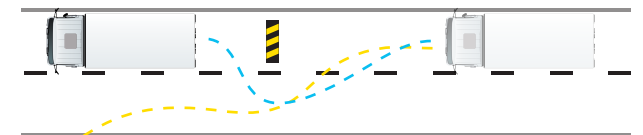
Otokar Atlas has it all: Full Air Brake System, EBS, Exhaust Brake, LDWS, AEBS, ESC and ACC.

Otokar Atlas also features a remote control central locking system.



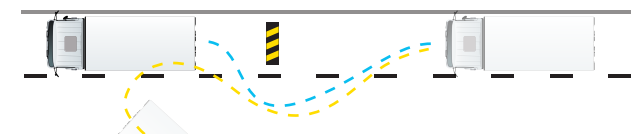
ACC (Adaptive Cruise Control)

Detects the distance with the vehicle ahead while cruising with the help of sensors, and automatically adjusts the distance and speed when needed.



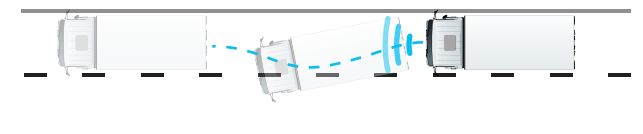
EBS (Electronic Brake System)

Delivers high brake power and shortens the braking distance. Ensures controlled braking by assisting steering wheel in emergency braking.



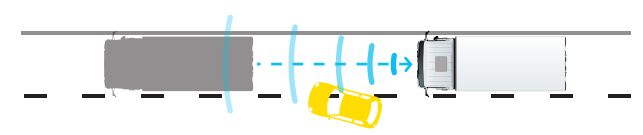
ESC (Electronic Stability Control)

Maintains the balance of the vehicle when it encounters an obstacle, and assists the driver in controlling the vehicle when taking corners and in emergency maneuvers.



LDWS (Lane Departure Warning System)

LDWS is activated when the vehicle departs its intended lane and alerts the driver.



AEBS (Advanced Emergency Braking System)

Detects potential critical situations and alerts the driver, and reduces the vehicle's speed to mitigate the impact of unavoidable collisions.

Reliable Components

Engine

Cummins 3.8lt Diesel Engine - Otokar Atlas sets new standards in technology and engineering.

Featuring state-of-the-art common-rail technology and a waste gated turbocharger, the engine delivers high torque even at low revs.

Gearbox

ZF 6+1 Gearbox - The robust, easy-to-maintain transmission with 6 gears ensure long-lasting driving pleasure.

The manual transmission is light for its high performance and is characterized by its long service life and operating smoothness.

The Frame

The frame - versatile and flexible. A common hole pattern on the ladder-type frame is suitable for almost all bodies. Extremely robust frame of Otokar Atlas, makes it withstand tougher road conditions.





Otokar Cares 7/24

Otokar Customer Service

Otokar Atlas is engineered for best reliability. The Otokar after-sales network is there to provide support whenever you need. All Otokar Commercial Vehicles comes by a 36 month standard warranty. Maintenance intervals for the Otokar Atlas have been stabilised at 20,000 km.

TECHNICAL SPECIFICATIONS

	Atlas 8.5 t S	Atlas 8.5 t L	Atlas 12 t
DIMENSION			
Length (mm)	: 5995	6955	6960
Width (mm)	: 2200	2270	2060
Height (mm)	: 2350	2350	2280
Wheelbase (mm)	: 3360	3800	3390+985
Front track width (mm)	: 1730-1762	1730-1762	1730
Rear track width (mm)	: 1615	1615	1615 / 1730
Front overhang (mm)	: 1110	1110	1120
Rear overhang (mm)	: 1515	2045	1450
Chassis width (mm)	: 800	800	800
Length of cargo box (mm)	: 4170	5140	5240

WEIGHT			
Technically permissible maximum mass on front axle (kg)	: 3000	2850	2900
Technically permissible maximum mass on rear axle (kg)	: 6000	6000	5800 (2. Axle) / 3400 (3. Axle)
Technically permissible maximum laden mass (kg)	: 8500	8500	12100
Kerb weight (kg)	: 2920	2950	3440
Payload (kg)	: 5580	5550	8640
Technically permissible max. mass of the combination (kg)	: 12000	12000	
Technically permissible max. towable mass in case of centre-axle trailer (kg)	: 3500	3500	
Technically permissible max. towable mass in case of unbraked trailer (kg)	: 750	750	

ENGINE	
Engine type	: Cummins Intercooler Turbo Diesel Euro6
Number of cylinders	: 4 / Inline
Engine Displacement	: 3800 cm ³
Max. Net Power	: 112 kW @ 2600 rpm
Max. Net Torque	: 534 Nm @ 1600-1800 rpm

CLUTCH	: Single disc, hydraulic control, air assisted (Servo)
---------------	---

TRANSMISSION	: Manuel (ZF) 6 forward gear, 1 reverse gear
---------------------	---

DIFFERENTIAL	
Differential Gear Ratio	: 4.3
	4.778

SUSPENSION	
Front and Rear Suspension	: Leaf spring Double effective shock absorbers Anti roll bar

BRAKES	
Service Brake	: Full air EBS 3.0, ESC
Front Brake	: Disc
Rear Brake	: Drum
Parking Brake	: Pneumatic Actuation
	2. Axle Drum, 3. Axle Disc

STEERING	: Hydraulic
-----------------	-------------

TYRES	: 215/75 R 17.5
--------------	-----------------

ELECTRICAL EQUIPMENTS	
Battery	: 2X12 V, 105 Ah
Alternator	: 28 V, 70 A
Starter Motor	: 24 V, 3,6 kW

PERFORMANCE	
Gradeability (%)	: 30
Maximum Speed	: 90 km/h

FUEL AND ADBLUE TANK	
Fuel Tank capacity (lt.)	: 120
Adblue Tank capacity (lt.)	: 30

TECHNICAL SPECIFICATIONS

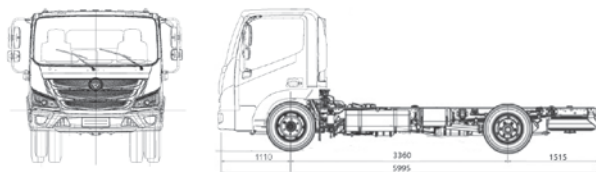
STANDARD EQUIPMENT	
AEBS (Advanced Emergency Brake System)	Adjustable Driver's Seat
LDWS (Lane Departure Warning System)	Seat belt
Air Conditioning (AC)	Side impact bars in doors
EP (Fuel Saving / Economy - Power) Button	Stowage Compartment
Cruise Control	Lighter-Ashtay
ACC (Adaptive Cruise Control)	USB Charging unit
Remote Control Central Locking	Windscreen sun visor
Digital Cluster	Glovebox
Trip Counter	Over windscreen stowage compartments
Hydraulic Steering (Tilt and telescopic features)	Cupholders
Door lock button from inside	Towing hook (Front and Rear)
Multi function steering wheel	Lockable fuel cap
Daytime Running Lamp (LED)	Lockable ad-blue cap
LED Cab Roof Running Marker Lights (Left and right side)	Floor mat
Fog Lamp	PTO preparation
Automatic headlights	Spare wheel
Step Lighting (Left and right side)	E-Coated Frame (Corrosion protection)
Adjustable head restraint	E-Coated Driver Cabin (Corrosion protection)
Rear Parking Sensor	
(DPF) Diesel particulate filter regeneration button	
Exhaust brake lever control	
Corner Light (activated by direction indicators)	
Bluetooth Radio/MP3 Player	
Headlamp leveling	
Heated and remote controlled rear view mirrors	
Power Windows with Driver's One-Touch Down	

OPTIONAL EQUIPMENT

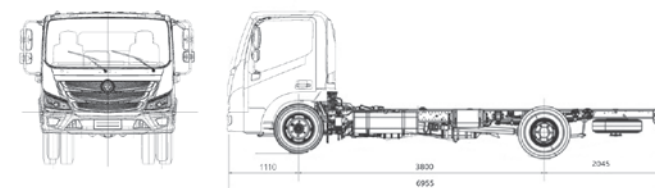
Digital Tacograph

All text and illustrations shown in this brochure are not binding and for guidance only. Otokar reserves the right to introduce modifications in line with technical progress and change the product specifications without any prior notice.

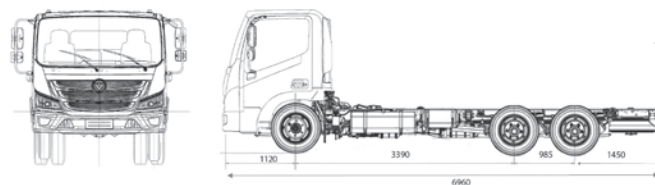
Atlas 8.5 t S



Atlas 8.5 t L



Atlas 12 t





TN04ED-22

Otokar Otomotiv ve Savunma Sanayi A.Ş.

Aydınevler Mahallesi Saygı Caddesi No:58 Maltepe 34854 İstanbul, Turkey



[commercial.otokar.com](https://www.commercial.otokar.com) [/OtokarGlobal](https://twitter.com/OtokarGlobal) [/OtokarTr](https://www.youtube.com/OtokarTr) [/OtokarGlobal](https://www.facebook.com/OtokarGlobal) [/OtokarGlobal](https://www.instagram.com/OtokarGlobal)

Otokar